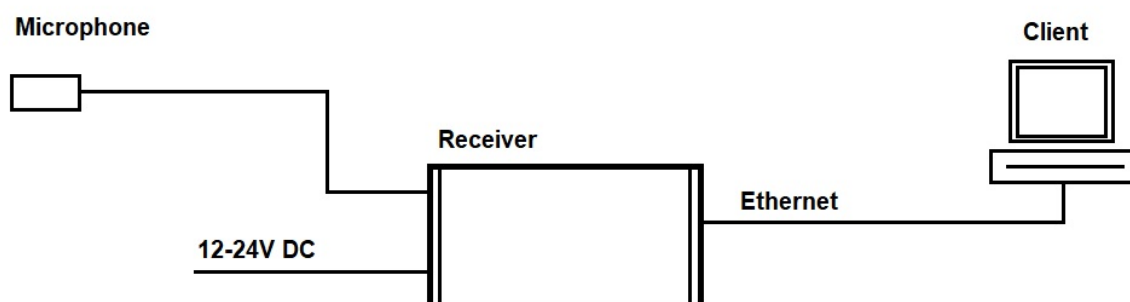
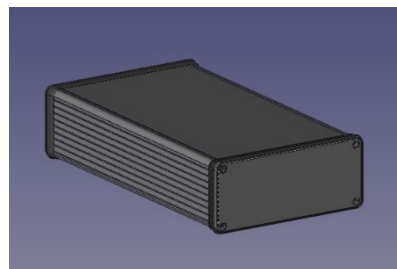


Datasheet

CN22/24 Receiver

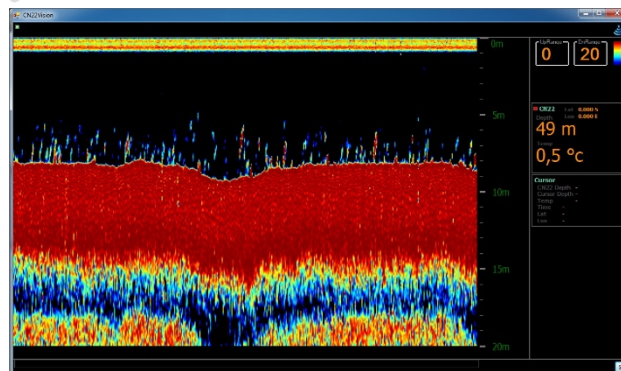
The receiver box is a compact box that is connected to the existing microphone for CN22/24 display. This is ment to be a substitute for the old display. The box processes the data received from the net recorder and makes the data available over ethernet by using a client software running on a windows platform.



Client software

The client connects to the box via ethernet. The box is setup with DHCP, and the client software can search for the receiver on the network.

The software records data and hold a history of the data and it is possible to save history to disk. It is possible to have multiple clients connected at the same time.



Technical specifications

Receiver size: Aluminium housing, 51.5 mm, 125 mm, 220 mm

Input voltage: 12-24V

Input frequencies: 33 kHz, 40 Khz and 50Khz (adjustable in software)